

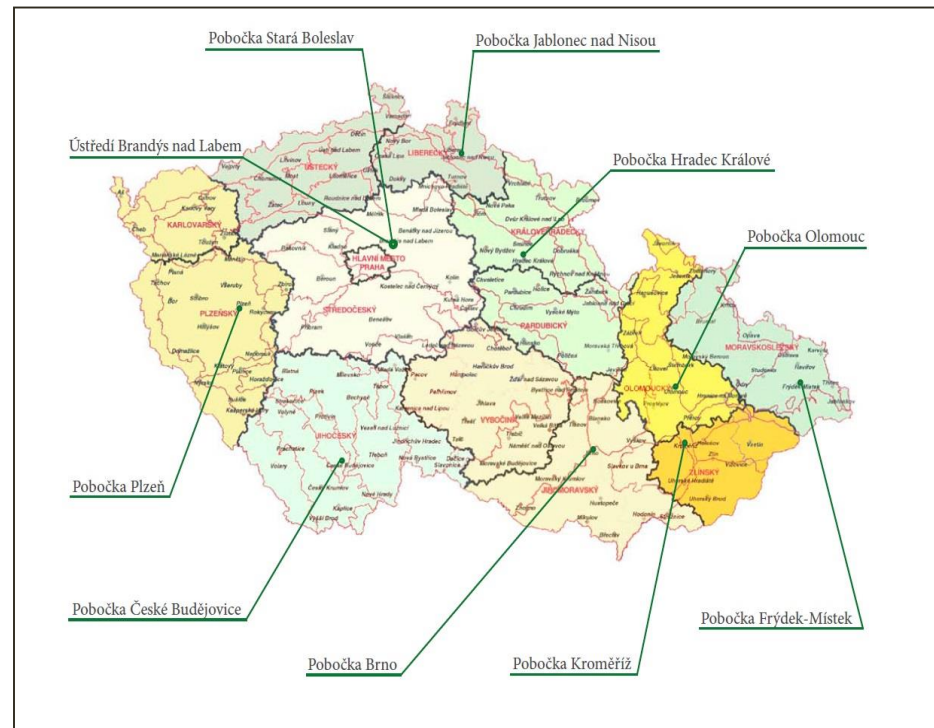


Opening the 2nd International Workshop on Forest Inventory Statistics.

Jaromír Vašíček
Forest Management
Institute Brandýs nad
Labem (FMI)

About FMI Brandýs nad Labem

- Government organization established by the Ministry of Agriculture of the Czech Republic
- History of the Institute dates back to 1935
- Sphere of action throughout the country ⇒ Headquarters in Brandýs nad Labem + 9 branch offices
- 428 employees



FMI Organizational Structure - 2015



Director

Secretariat

Division of Forest Management and Ecology

Division of Information Systems and Technologies

Division of Economics and Human Resources

9 Branches

Brno

České
Budějovice

Frýdek
Místek

Hradec
Králové

Jablonec
nad Nisou

Kroměříž

Olomouc

Plzeň

Stará
Boleslav

List of FMI main activities

- **National forest inventory in the Czech Republic**
- EU Timber Regulation
- Forest reproductive material
- Regional Forest Development Plans, forest typology
- State Forest and Game Management Authority support
- Forest management counselling
- Information and Data Centre
- Support of forest certification
- Expert opinions
- Development of forest management planning
- National Forestry Programme
- Reprographic and bookbinding works
- Forest pedagogics



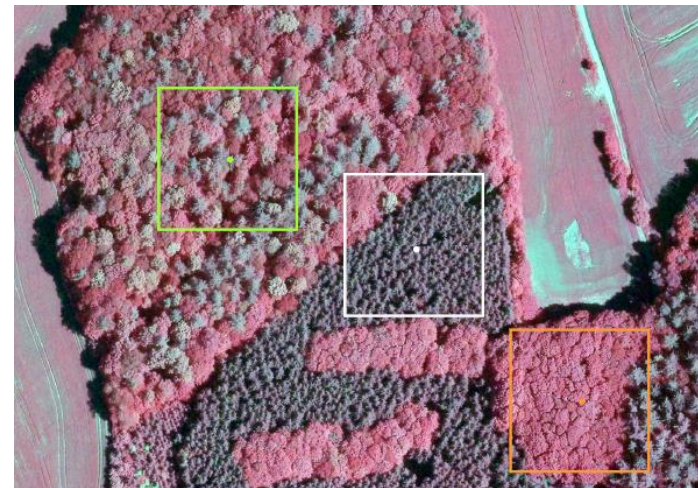
National Forest Inventory

- The first cycle in CR 2001–2004
- The second cycle in CR 2011– 2015
- Mathematic-statistical method to assess the state and development of forests
- Objective information
- Repeated ground measurements on inventory plots across the country (CR)
- Evaluation of results for large territorial units (CR, Regions, Natural Forest Regions)
- NFI outputs are estimates of preselected parameters
- Accuracy of outputs is expressed in the form of interval estimates



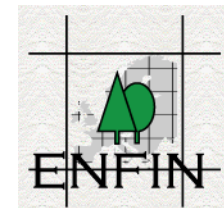
NFI – Photogrammetry and Remote Sensing

- Improved accuracy of outputs
- Acquisition of estimates for smaller areas (Region, Natural forest region)
- Effective organization of land surveying
- Assurance of outputs fully complying with requirements of international organizations (FAO, ENFIN)
- Complementary information to NFI data in relation to landscape diversity (continuity with ENFIN – project COST e43)



International cooperation in NFI

- **ENFIN** – European National Forest Inventory Network
- **COST E43** – Harmonization of NFI methodologies
- **COST USEWOOD** – NFI as an information base about timber resources – harmonization of methodologies at a level of defining timber reserves, increments, assortments etc., use of remote sensing in NFI, prediction of the development of timber resources
- **EFI** – NFI 1 data for the EFISCEN economic model
- **E-Forest** – NFI resource data for European Commission and JRC – EU map of woody plants
- **FAO – FRA** – obligatory reports into forest registries for the Czech Republic
- **NFI 2 Opposition Proceedings** – Italy, Switzerland, France, Austria, UK Prague
- **Cooperation with other NFIs** – namely Switzerland and France

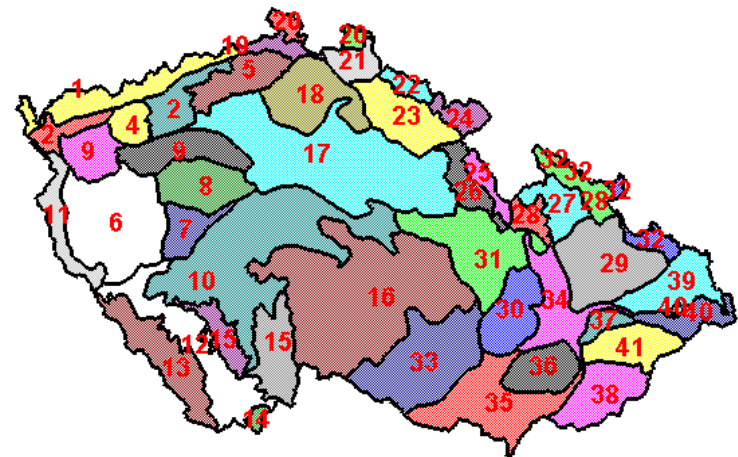


Regional plans of forest development

- Methodological tool of the state forest policy
- Recommend principles of forest management in developing and approving Forest Management Plans/Guidelines
- Elaborated for individual Natural Forest Regions

Summarize important information from the following fields:

- Natural conditions
- Forest road pattern
- Forest protection
- Forest functions



EU Timber Regulation (EUTR)

- EU Regulation **No. 995/2010** on the placing timber and timber products on the market
- The aim of this regulation is to prevent illegally harvested timber on the EU markets
- Authorized person
- Due diligence systém for operators
- FMI provides technical assistance and advisory assistance



Forest reproductive material

- FMI is an „authorized person“
- It performs expert operations and control in the field of forest reproductive material management



Support to the State Forest and Game Management Authority

- Professional and **technical support** to authorized Support to the State Forest and Game Management Authority officers
- Elaboration of expert opinions

- **Support**
 - Preparation of groundwork documents for Forest Management Guidelines
 - Formal control of FMP and FMG data in compliance with the Forestry Information Standard prior to data storage
 - Elaboration of the overview maps of forests with newly developed and approved FMP and FMG in the digital format

Counselling in Forest Management

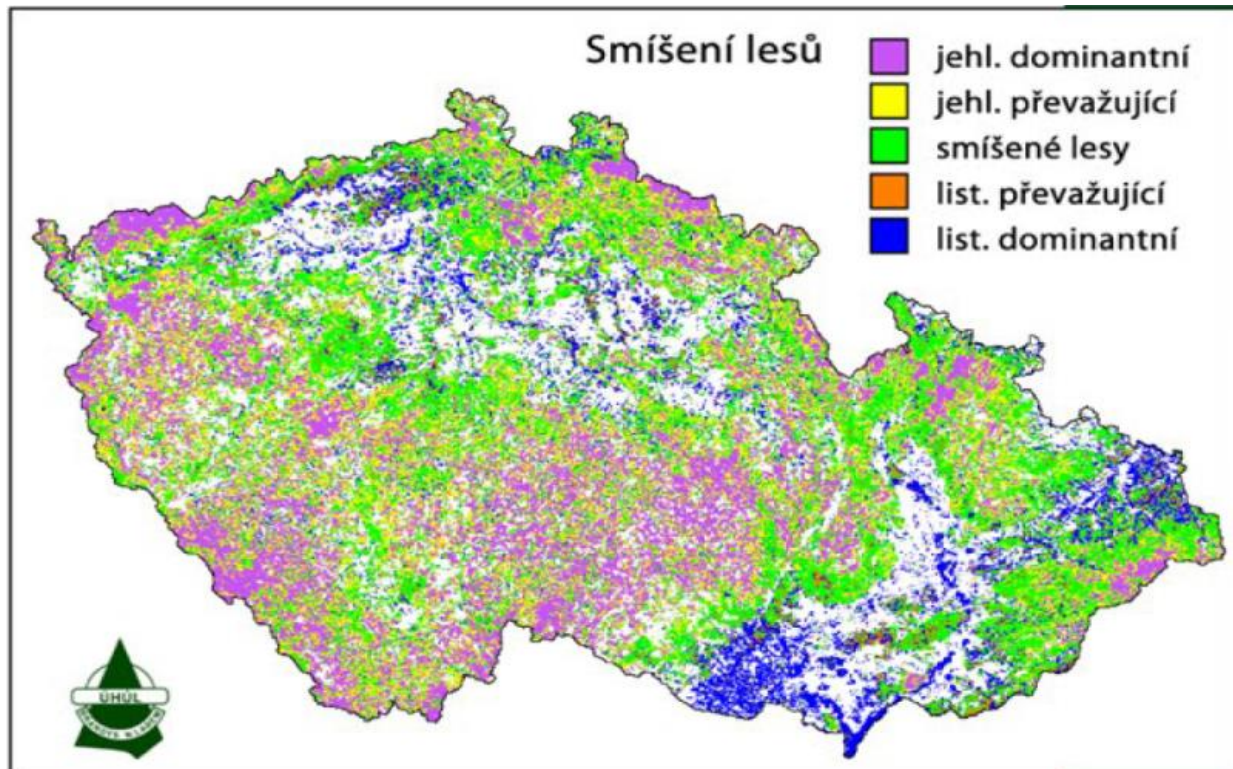
- **FMI provides counselling especially in the following fields:**
 - Financial aids in forestry,
 - Legal requirements for the forest management,
- **Counselling in forest management is intended for:**
 - forest owners and their associations,,
 - bodies of state forest administration

Guidelines, publications, telephone and electronic inquiries, web sites, educational and informative events



Information and Data Centre

- Forest Management Institute **operates a central database and archives on forests and game management** in the Czech Republic
- **FMI provides outputs** to the Ministry of Agriculture in the field of forestry



Forest Certification

- Confirmation of sustainable management on forest lands and in the process of timber conversion
- Forest Management Institute ensures counselling and services in forest certification in the Czech Republic

Certification systems used in the Czech Republic

PEFC Česká
www.pefc.cz



FSC ČR
www.czechfsc.cz



Expert Opinions

- Forest Management Institute is enlisted in the second section of the list of institutes qualified for **expert activities**

- **Fields of expert activities:**
 - economy (valuation of lands, permanent stands and damaged to forest stands, operation and economy of forest production),
 - and forest management (forest management planning)

- **An output from expert activities of FMI may be:**
 - Expert opinion,
 - Expert statement at the request of law enforcement,
 - Expert judgement

Projects in several countries

- The first project: Forest inventory – Mongolia, 1956
- The largest project: Forest inventory – Congo, 1974 - 1988
- Other forest inventories - Angola, Laos, Cambodia
- Long-term assistance in forestry – Cameroon, Guinea, Mozambique etc.
- FAO project – Togo
- Teaching at the university of forestry – Mozambique
- Project „GIS for Kamchatka“, 1996 - 98
- Project Morocco“ – 1998 - 2000
- GIS for Chile
- **2015**
 - Forest genetic material – Mongolia
 - Remot sensing Bosna Hercegovina



Field measurement of the forests in Laos 1979 –1980

Thank you for your kind attention

Jaromír Vašíček
Vasicek.Jaromir@uhul.cz